

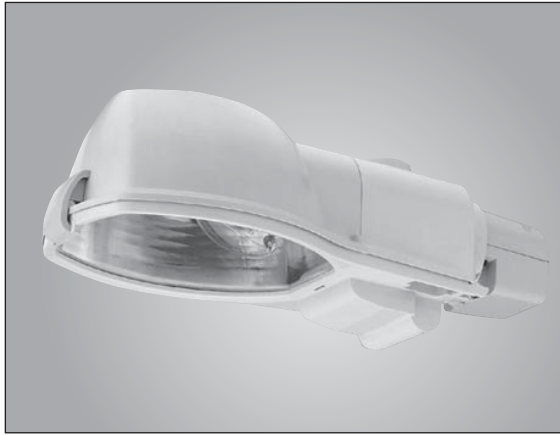


Consistent with LEED® goals  
& Green Globes™ criteria  
for light pollution reduction

# DuraStar™ Series 20

Roadway Lighting  
50-150W HPS, 100-175W MH

## PRODUCT OVERVIEW



### Applications:

- Roadways
- Residential areas
- Coastal areas — salt/corrosive environments
- Parking lots
- Storage areas

### Features:

Revolutionary DuraLock™ docking system provides modular installation and interchangeability for easy maintenance. Rugged die-cast, powder-coated docking station mounts securely to mast-arm to ensure secure wiring and long-lasting stability. Durable lightweight lighting fixture positively docks by plugging in with a 20° locking twist

High-efficiency optical system maximizes light output while minimizing glare

Starter component is externally accessible for easy maintenance and is fully encapsulated for long life

Wildlife shield is cast into the docking station (not a separate piece) and is easily adjustable for 1-1/4" to 2" (1-5/8" to 2-3/8" O.D.) mast arms

Cam-latch doorframe allows easy re-lamping without tools

Large surface area "breathing seal" gasket, seals the optical chamber to prevent intrusion by insects and environmental contaminants. Heat-resistant gasket material remains effective over the life of the fixture

Photocontrol receptacle is adjustable without tools

All electrical components warranted by American Electric Lighting's 6-year guarantee

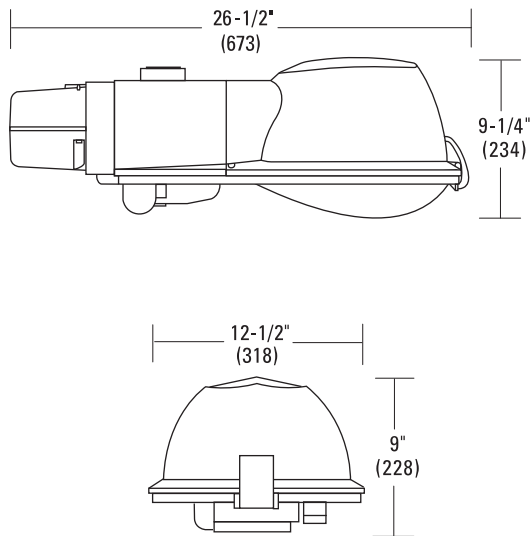
E39 mogul base socket standard

Suitable for -30°C MH / -40°C HPS

Optical chamber is IP64 rated standard

Complies with ANSI: C136.2, C136.10, C136.15, C136.31

### DIMENSIONS



#### Effective Projected Area (EPA)

The EPA for the DuraStar™ is .56 sq. ft.  
The EPA for the DuraStar™ sag lens, is .70 sq. ft.  
Approx. Wt. = 14 lbs.

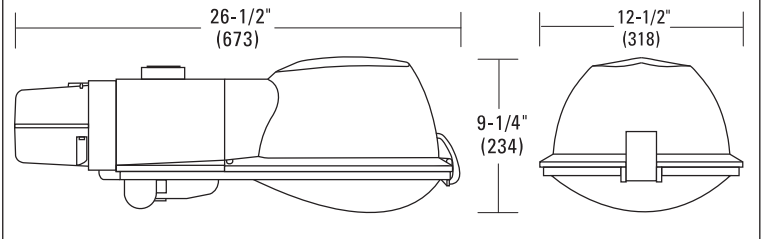
### PREFERRED SELECTION CATALOG NUMBERS

20 10S RN 120 R2 FG

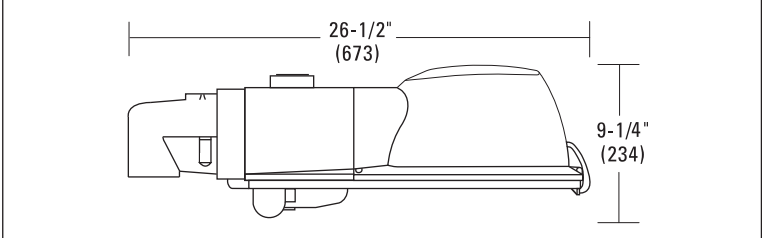
20 10S RN 120 R3 FG

20 15S RN 120 R2 FG

#### Horizontal Arm Mount



#### Vertical Tenon Mount



# DuraStar™ Series 20

## Roadway Lighting

50-150W HPS, 100-175W MH

### ORDERING INFORMATION

Example: 20 10S RN 120 R3 FG LC PC

Series	Wattage / Source		Ballast	Voltage	Distribution
20 DuraStar Cobrahead	05 50W	S HPS	RN Reactor Normal Power Factor	120 120V	R2 Roadway Type II
	07 70W	M MH <sup>2</sup>	RH Reactor High Power Factor	208 208V	R3 Roadway Type III
	10 100W		XN High Reactance (Lag) Normal Power Factor	240 240V	Refer to optic distribution matrix below for compatibility.
	15 150W		XH High Reactance (Lag) High Power Factor	277 277V	
	17 175W <sup>1</sup>		CA CWA <sup>2</sup>	347 347V	
			CT CWI	480 480V	
			SC SCWA	MT1 Multi-tap Wired 120V	
				MT2 Multi-tap Wired 240V	
				MT7 Multi-tap Wired 277V	
				TT3 Tri-tap Wired 347V	
				DT2 Dual Tap 120/240 Wired 240V	
					Optics
					SA Sag Acrylic Lens
					SP Sag Polycarbonate Lens
					FG Flat Glass Clear Tempered <sup>3</sup>

Ⓔ See ballast matrix for EISA compliant options

Options
---------

#### Mounting

(blank)	Duralock Docking Station Set for 1-1/4" Mast Arm
M2	2-bolt Internal 2" Setting, for Duralock Docking Station for 2" Mast Arm
ML	Less Duralock Docking Station

#### Paint

(blank)	Gray (standard)
---------	-----------------

#### Listing

UL	UL Listed
CS	CSA Certified

#### Photocontrol Receptacle

(blank)	NEMA Photocontrol Receptacle
NR	No Photocontrol Receptacle <sup>4</sup>

#### Lamp

LC	Lamp Included, Clear
LD	Lamp Included, Deluxe/Coated

#### Misc.

PC	Photocontrol Included per Voltage Specified <sup>4</sup>
PK	Package (includes lamp, photocontrol, 5' supply-wire, mast arm, hardware)
SS	Stainless Steel Fasteners (external)
PL	Distribution Pattern Indicator Label
SH	Shorting Cap <sup>4</sup>
LCU	Low Copper Alloy Content Docking Station (less than 1%)

#### Notes:

- When ordered with metal halide, these wattages do not comply with California Title 20 regulations
- CA ballast is not available with 175W - 400W metal halide in the U.S.; must use SC
- Nighttime Friendly™ optic
- PC and SH not available with NR option

#### Optic Distribution

	R2 SA	R3 SA	R2 SP	R3 SP	R2 FG	R3 FG
05S	◆	◆	◆	◆	◆	◆
07S	◆	◆	◆	◆	◆	◆
10S	◆	◆	◆	◆	◆	◆
10M	◆	◆	◆	◆	-	-
15S	◆	◆	◆	◆	◆	◆
15M	-	-	◆	◆	-	-
17M	-	-	◆	◆	-	-

### BALLAST MATRIX

#### DuraStar Series 20

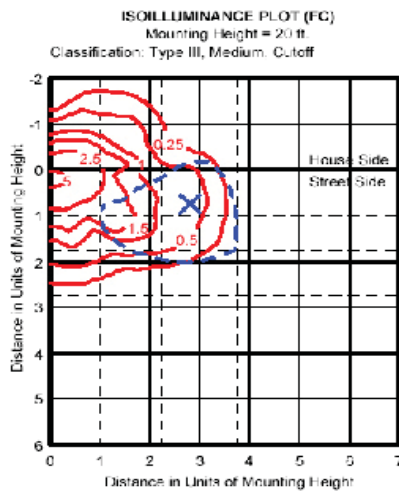
Watts	120	208	240	277	480	DT2	DT4
05S	RH,RN,XN	XN	XN	XN	XN	-	-
07S	CA,CT,MR,RN,RH,XN,XH	CA,CT,MR,XH,XN	CA,CT,MR,XH,XN	CA,CT,MR,XH,XN	XH,XN	CA,CT,MR	CA,CT,MR
10S	CA,CT,MR,RN,RH,XN,XH	CA,CT,MR,XH,XN	CA,CT,MR,XH,XN	CA,CT,MR,XH,XN	CA,XN,XH	CA,CT,MR,XH	-
10M	XH	XH	XH	XH	-	XH	-
15S	CA,CT,MR,RN,RH,XN,XH	CA,CT,MR,XH,XN	CA,CT,MR,RN,RH,XN,XH	CA,CT,MR,XH,XN	CA,CT,MR	CA,CT,MR,XH,XN	-
15M	XH,XN	XH,XN	XH,XN	XH,XN	-	-	-
17M	SC	SC	SC	SC	SC	SC	-

#### DuraStar Series 20 Continued

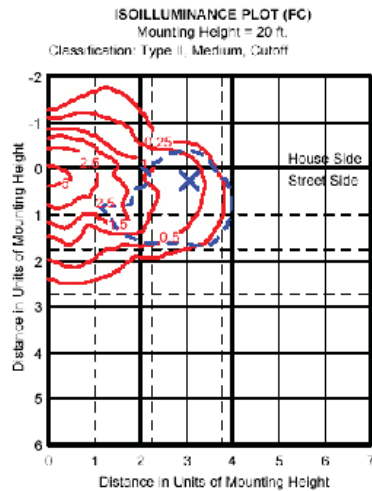
Watts	MT1	MT2	MT7
05S	XN	XN	XN
07S	XH,XN	XH,XN	XH,XN
10S	CA,CT,XH,XN	CA,CT,XH,XN	CA,CT,XH,XN
10M	XH	XH	XH
15S	CA,CT,RN,RH,XN,XH	CA,CT,RN,RH,XN,XH	CA,CT,RN,RH,XN,XH
15M	-	-	-
17M	SC	SC	SC

### PHOTOMETRICS

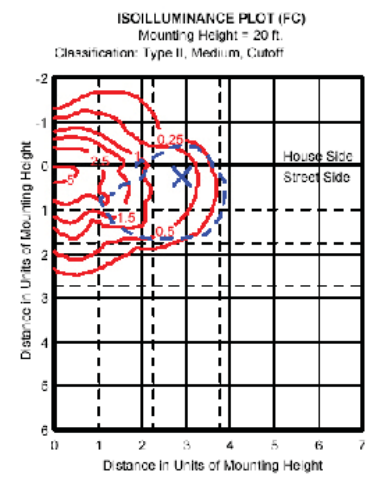
20 15S R3 FG



20 15S R2 SP



20 15S R2 FG



X Maximum Intensity  
--- 1/2 Maximum Intensity

# DuraStar™ Series 20

## Roadway Lighting

50-150W HPS, 100-175W MH

---