

DESCRIPTION

The OVH Flat Glass roadway luminaire is ideal for roadways where cutoff is preferred or light trespass is an issue. Suitable for 3G vibration conditions.

Catalog #		Type
Project		
Comments		Date
Prepared by		

SPECIFICATION FEATURES

A ... Housing

Die-cast aluminum housing and latch. Standard grey polyester powder coat finish. Other finish colors available. Consult your Streetworks Representative. Optional NEMA twistlock photocontrol receptacle also available.

B ... Socket

Adjustable mogul-base porcelain socket.

C ... Door

Die-cast aluminum door frame with integral hinges for toolless relamping and maintenance. ANSI wattage/source label.

D ... Lens

Removable tempered flat glass for use with High Pressure Sodium, Metal Halide and Mercury lamp sources.

E ... Reflector

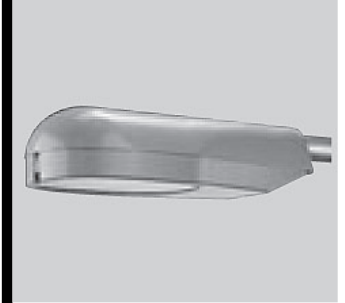
The optical system is a hydroformed anodized aluminum reflector with a Dacron polyester filter.

F ... Ballast Assembly

Hard mounted ballast with encapsulated starter for protection from environmental abuse. Standard two position tunnel type compression terminal block. Three position available. Consult your Streetworks Representative.

G ... Mounting

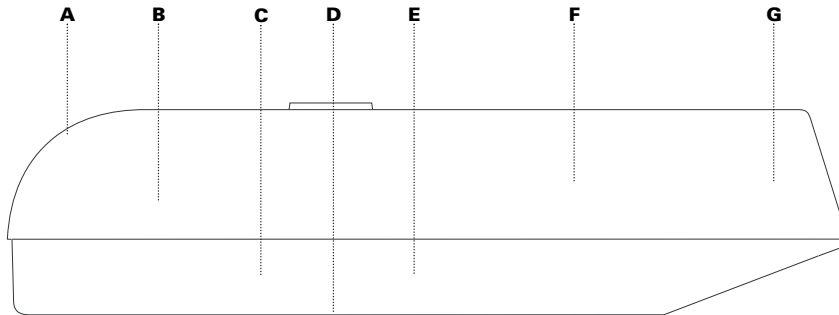
Two-bolt/one bracket slipfitter with cast-in pipe stop and leveling steps. Fixed-in-place birdguard seals around 1 1/4" or 2" mounting arms.



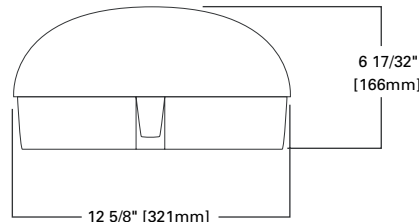
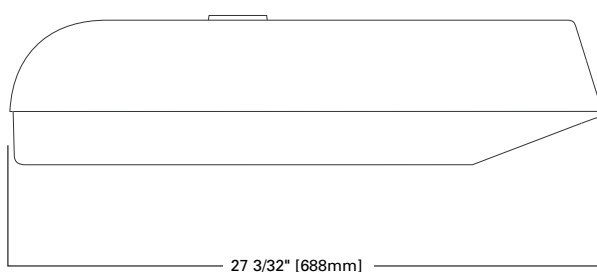
OVH FLAT GLASS

50-250W
Metal Halide
High Pressure Sodium
Mercury

**ROADWAY
LUMINAIRE**



DIMENSIONS



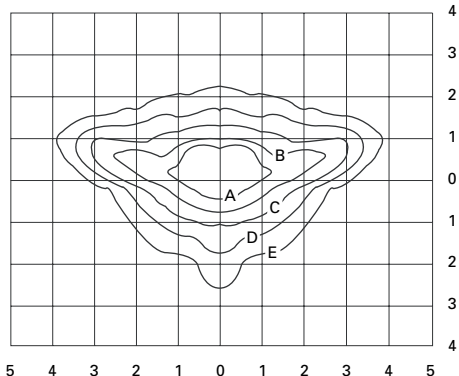
EPA

Effective Projective Area:
.80

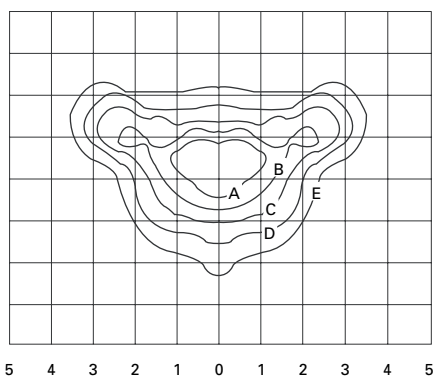
SHIPPING DATA

Approximate Net Weight:
28 lbs. (13 kgs.)





OVH15S2D.IES
 150-Watt HPS
 16,000-Lumen Clear Lamp
 Type II-Medium Cutoff



OVH15S3D.IES
 150-Watt HPS
 16,000-Lumen Clear Lamp
 Type III-Medium Cutoff

FOOTCANDLE TABLE
 Select mounting height and read across for footcandle values of each isofootcandle line.
 Distance in units of mounting height.

Mounting Height	Footcandle Values for Isofootcandle Lines				
	A	B	C	D	E
OVH15S2D.IES					
20'	3.12	1.56	0.78	0.39	0.16
25'	2.00	1.00	0.50	0.25	0.10
30'	1.30	0.65	0.33	0.16	0.07
35'	1.02	0.51	0.26	0.13	0.05
OVH15S3D.IES					
20'	3.12	1.56	0.78	0.39	0.16
25'	2.00	1.00	0.50	0.25	0.10
30'	1.30	0.65	0.33	0.16	0.07
35'	1.02	0.51	0.26	0.13	0.05

PHOTOMETRIC DISTRIBUTION (Curve Number)

Wattage	Light Source ¹	Lens Type	II MCO	III MCO
50-150	HPS	Flat Glass	OVH15S2D (150W)	OVH15S3D (150W)
175	MH	Flat Glass	OVH17M2D (175W)	OVH17M3D (175W)
200-250	HPS	Flat Glass	N/A	OVH25S3D (250W)

NOTE: 1 All light sources are clear unless noted otherwise.

ORDERING INFORMATION

Sample Number: OVH50SR22D4

<p>Product Family OVH: Flat_Glass_Luminaire</p> <p>Lamp Wattage 50: 50W 70: 70W 10: 100W 15: 150W¹ 17: 175W 20: 200W 25: 250W</p>	<p>Lamp Type ² M: Metal Halide S: High Pressure Sodium V: Mercury</p> <p>Ballast Type ² C: CWI R: Hi.Reac./NPF H: Reac./HPF M: Mag Reg N: Hi.Reac./NPF P: Hi. Reac./HPF W: CWA K: 10KV CWA³</p>	<p>Voltage ² 2: 120V 0: 208V 4: 240V 7: 277V 8: 480V 9: 347V F: 120/240 wired 120V W: Multi-Tap wired 120V V: Multi-Tap wired 240V N: Multi-Tap wired 277V</p>	<p>Distribution 2: Type II 3: Type III</p> <p>Optical Package D: MCO</p>	<p>Options 1: Single Fuse, Internally Mounted (120, 277V) 2: Double Fuse, Internally Mounted (208, 240, and 480V) 4: Internal NEMA Photocontrol Receptacle WH: White BK: Black BZ: Bronze E: 150/100V HPS Ballast H: Plug-In Starter Receptacle K: Level Indicator M: MOV Lightning Surge⁴ Protectors U: U.L./CSA Listed</p>	<p>Accessories OARA1016: NEMA Photocontrol - Multi-Tap OARA1013: Photocontrol Shorting Cap OARA1014: 120V Photocontrol OARA1027: NEMA Photocontrol 480V OA1213: TufGuard Vandal Shield</p>
--	---	--	---	---	--

Notes: 1 150W Units are for S55 Lamps. 2 Refer to the technical section for lamp/ballast voltage compatibility. 3 Available 50-150W. 120/240 or single voltage only. 4 MOV option not available for any system requiring a three position terminal block (example - 240V with PCR wired 120V). In order for MOV option to function center terminal of three position terminal block must be connected to "Earth" ground.